



Part of



University of  
Nottingham

UK | CHINA | MALAYSIA

## MATERIAL WORLDS: CONTEMPORARY ARTISTS AND TEXTILES

A free touring exhibition from Southbank Centre at Nottingham's Lakeside Arts

**Saturday 17 May – Sunday 31 August 2025**

**Launch event: Friday 16 May, 7-9pm**

**Lakeside Arts, University of Nottingham**

**Free Admission**

Images available [here](#).

An exciting art exhibition is opening at Lakeside Arts' Djanogly Gallery this spring, *Material Worlds: Contemporary Artists and Textiles*. This ambitious, free, group exhibition explores how contemporary artists are using textiles in surprising and radical ways.

At the heart of the UK and with a long history in lace manufacturing, Nottingham is a fitting location for this exhibition, which focuses on current practices in textile arts and how artists are reimagining the material. Illuminating the diverse roles textiles play in contemporary artistic practice, the exhibition brings together artists who take the intimate and domestic quality of textiles and transform them into theatrical, unsettling and humorous art works that inspire, challenge and offer new ways of thinking.

Southbank Centre's Hayward Gallery Touring aims to create cultural experiences with a bold and imaginative touring programme across the UK. Just a few months after the critically acclaimed *Paula Rego: Visions of English Literature* exhibition, also hosted by Lakeside Arts, *Material Worlds* began its tour at Warwick Arts Centre, Coventry last autumn, with Lakeside Arts being its second showing.

The exhibition will feature works by several artists, including Nottingham-based artist Yelena Popova, who will exhibit Jacquard woven tapestries. Yelena, who has lived in the UK for over 20 years, was raised in Ozyorsk, USSR, the birthplace of the Soviet nuclear weapons programme. Her brightly coloured, decorative textiles betray a more sinister origin, drawing on her research into first generation nuclear power plants in the UK.

Two artists whose works have previously featured in group exhibitions at Lakeside Arts are Holly Hendry and Yinka Shonibare. Holly Hendry's kinetic sculpture *Slacker* (2019), which uses synthetic materials, fabrics, and aggregates of reused plastics to create a rotating 'skin', is inspired by the historical Jacquard loom. It is easily the largest work in the show, resembling a vast textile manufacturing machine that occupies the entire first gallery space. Shonibare is represented by two works featuring Dutch wax-printed cotton textiles, which are popular in clothing in West Africa. His art may be familiar to those who visited Lakeside Arts' 2023 *Reimag(in)ing the Victorians* exhibition.

0115 846 7777 | [lakesidearts.org.uk](http://lakesidearts.org.uk)  
Lakeside Arts, University Park, Nottingham, NG7 2RD

Featuring work created predominantly over the last decade by fifteen UK-based artists, *Material Worlds* highlights their deep awareness of textiles' cultural history and a shared desire to challenge its traditional associations. The familiar fabric of everyday life is reimaged into the unexpected to reflect on ideas of gender, identity, community, race, technology, and myth, demonstrating how textiles can be transformed in the hands of different artists.

Further artists featured in the exhibition include Caroline Achaintre, Jonathan Baldock, Marc Camille Chaimowicz, Holly Hendry, Tonico Lemos Auad, Paul Maheke, Anna Perach, Yelena Popova, Paloma Proudfoot, Yinka Shonibare, Rae-Yen Song, Tenant of Culture and Zadie Xa.

Caroline Achaintre, curator of *Material Worlds*, says: *"It has been a great pleasure to develop and curate Material Worlds alongside the Hayward Gallery Touring team. I wanted the exhibition to emphasise the transition from something quite everyday, domestic, and supposedly unspectacular, into the creation of fantastical and extraordinary works, worlds, and visions."* Brian Cass, Senior Curator of Hayward Gallery Touring, says: *"Bringing together a diverse range of artists [...], Material Worlds is an expansive exhibition exploring how simple everyday materials are being used to surprise and provoke, creating worlds and telling stories ranging from the personal to the cosmic."*

Neil Walker, Head of Visual Arts Programming, Lakeside Arts, said: *"I was delighted to be able to bring this Hayward Gallery Touring exhibition to Nottingham. It was an obvious choice for our programme given the city's rich textile heritage, and it demonstrates how today's artists have taken a practical and decorative material and pushed it in so many new and exciting directions."*

This exhibition is proudly sponsored at Lakeside Arts by Leonard Design, a creative, multi-disciplinary team with leading expertise across architecture, master planning, interiors and graphic design. In tandem with their sponsorship, Leonard Design are collaborating with the Lakeside Arts team on a transformational redesign of some of the front-of-house spaces in Lakeside Arts' DH Lawrence Pavilion and Djanogly Gallery buildings. Leonard Design are excited to play a part in shaping the future of Lakeside Arts, just as *Material Worlds* reshapes how we experience the materials of everyday life.

*Material Worlds* can be viewed between Saturday 17 May – Sunday 31 August 2025, with a free launch event visitors are welcome to join on Friday 16 May, 7-9pm. More information at [lakesidearts.org.uk/MaterialWorlds](https://lakesidearts.org.uk/MaterialWorlds)

-- ENDS --

For more information and to arrange interviews, please contact Lakeside Arts' Marketing and Communications Managers Mária Konyeliccka-Visky [maria.konyeliccka-visky@nottingham.ac.uk](mailto:maria.konyeliccka-visky@nottingham.ac.uk) and Amy Steels [amy.steels@nottingham.ac.uk](mailto:amy.steels@nottingham.ac.uk)

## NOTES TO EDITORS

### Lakeside Arts, University of Nottingham

Lakeside Arts is the University of Nottingham's public arts centre presenting a programme of visual arts, manuscripts and museum exhibitions, as well as music, theatre, dance, children and families' productions. Its venues include the Djanogly Gallery, opened in 1992, that stages a year-round programme of 20th-century and contemporary art exhibitions complemented by a lively programme of public lectures and learning activities.

0115 846 7777 | [lakesidearts.org.uk](https://lakesidearts.org.uk)  
Lakeside Arts, University Park, Nottingham, NG7 2RD

Recent exhibitions have included: *Saad Qureshi: Conversations Before the End of Time* (2024), *Reimag(in)ing the Victorians* (2023-2024), *Rhythm & Geometry: Constructivist Art in Britain Since 1951* (2023), *Michael Forbes: Blk this & Blk that... a state of urgency* (2022).

[lakesidearts.org.uk](http://lakesidearts.org.uk)

Lakeside Arts Facebook, Instagram and X (formally Twitter): @LakesideArts

### **About Hayward Gallery Touring**

Hayward Gallery Touring is the UK's largest contemporary art organisation producing touring exhibitions. Based at Southbank Centre, Hayward Gallery Touring works with a range of artists, curators, designers and writers to develop curatorial projects and ambitious exhibitions that are often beyond the scope of a single institution. Hayward Gallery Touring's programme includes the British Art Show - the largest and most significant exhibition of contemporary art produced in the UK - as well as thematic group shows and monographic exhibitions created for venues including museums, galleries, art centres, libraries, schools, hospitals and other unexpected partners and places. Hayward Gallery Touring exhibitions are seen by up to half a million people in over 45 cities and towns each year.

### **About the Southbank Centre**

The Southbank Centre is the UK's largest arts centre, occupying 11 acres along the river and its 4 venues anchor London's most vibrant cultural quarter on the South Bank of the Thames. We exist to present great cultural experiences that bring people together and we achieve this by providing the space for artists to create and present their best work and by creating a place where as many people as possible can come together to experience bold, unusual and eye-opening work. The site has an extraordinary creative and architectural history stretching back to the 1951 Festival of Britain. Southbank Centre is made up of the Royal Festival Hall, Queen Elizabeth Hall, Purcell Room and Hayward Gallery as well as being home to the National Poetry Library and the Arts Council Collection. It is also home to six Resident Orchestras (Aurora Orchestra, Chineke! Orchestra, London Philharmonic Orchestra, London Sinfonietta, Orchestra of the Age of Enlightenment and Philharmonia Orchestra). [www.southbankcentre.co.uk/](http://www.southbankcentre.co.uk/)

[southbankcentre.co.uk](http://southbankcentre.co.uk)

Southbank Centre Facebook, Instagram and X (formally Twitter): @Southbank Centre

### **About Leonard Design**

Leonard Design is a creative, multi-disciplinary team with leading expertise across architecture, masterplanning, interiors and graphic design. Founded in 2007, we deliver high quality, sustainable projects that respond to context, inspire communities and stand the test of time. Collaboration sits at the heart of our approach, driving future focused design that delivers real value.

With studios in the UK, Germany, Malaysia and South Korea, we work internationally with a strong understanding of local culture and place. Our work spans retail, commercial, life sciences, residential and cultural destinations and we are passionate about shaping places that make a lasting difference for our clients, our communities and the environment.

### **LISTING INFORMATION**

**Exhibition Dates:** Saturday 17 May – Sunday 31 August 2025

**Opening Hours:** Tuesday-Saturday, 10am-4pm | Sunday 12noon-4pm (Closed Mondays)

**Address:** Djanogly Gallery, University Park, Nottingham, NG7 2RD

0115 846 7777 | [lakesidearts.org.uk](http://lakesidearts.org.uk)  
Lakeside Arts, University Park, Nottingham, NG7 2RD

**Admission:** Free

**Events:** For talks and events please book online or call the Box Office on 0115 846 7777

## RELATED EVENTS

### Launch Event | Friday 16 May, 7-9pm

Join us to celebrate the launch of the exhibition – admission is free, no prior booking required.

### An introduction to Material Worlds | Talk | Thursday 17 July, 1-2pm

Artist and Curator, Caroline Achaintre, explores the ideas behind the exhibition introducing the individual artists and their unique approaches to working with, or responding to, textiles.

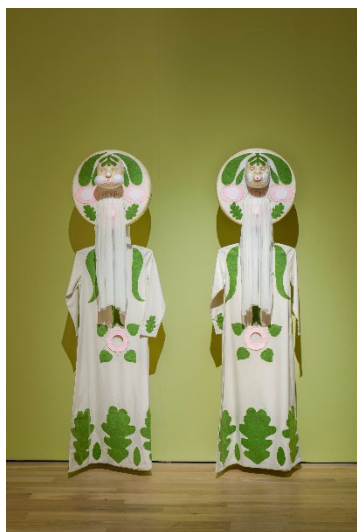
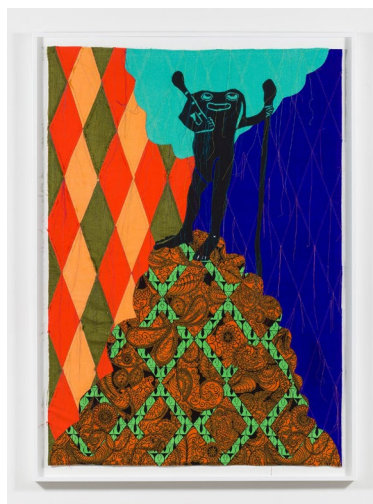
## GALLERY TOURS

**Thursday 5 June** | led by Yelena Popova, exhibiting artist

**Thursday 26 June** | led by Craig Fisher, artist

**Thursday 10 July** | led by Neil Walker, Head of Visual Arts Programming, Lakeside Arts

## IMAGES



0115 846 7777 | [lakesidearts.org.uk](http://lakesidearts.org.uk)  
Lakeside Arts, University Park, Nottingham, NG7 2RD

### **Image Credits** (left to right)

- *Song Dynasty*, 2021 by Rae-Yen Song © the artist. Assorted appliquéd fabrics, copper, paper maché, painted MDF, steel and PVC. Photo: Luke Pickering
- Yinka Shonibare CBE RA, *Creatures of the Mappa Mundi – Epiphagi*, 2018 – 2019. Patchwork, appliqué, embroidery and Dutch wax printed cotton textile. © the artist. Courtesy the artist and Stephen Friedman Gallery, London and New York. Photo by Stephen White & Co
- *The Caretakers (Ceremonial Costumes “I’m still Learning”)*, 2021 by Jonathan Baldock © the artist. Textile, rubber, foam and wood two figures. Photo: Luke Pickering
- Holly Hendry, *Slacker*, 2019. Steel, aluminium, motor, perspex, Jesmonite, silicone, fabric, recycled plastics and aggregate. © the artist. Courtesy the artist; Yorkshire Sculpture Park; and Stephen Friedman Gallery, London and New York. Photo by Mark Reeves.

### **Image Terms and Conditions**

- These images are copyright-cleared for reproduction in all print, broadcast and digital media in the context of publicity for the Hayward Gallery Touring exhibition *Material Worlds: Contemporary Artists and Textiles*.
- The images may not be cropped, bleed off the page, overprinted with text, or altered in any way and may not be passed to any third parties without further permission.
- All credit information must appear whenever an image is reproduced